

# Model Design for community centre

## GROUND FLOOR PLAN

PLINTH AREA=260.9 SQMT

Drg. No.	E-1
Scale	NTS
Date	3-11-2007

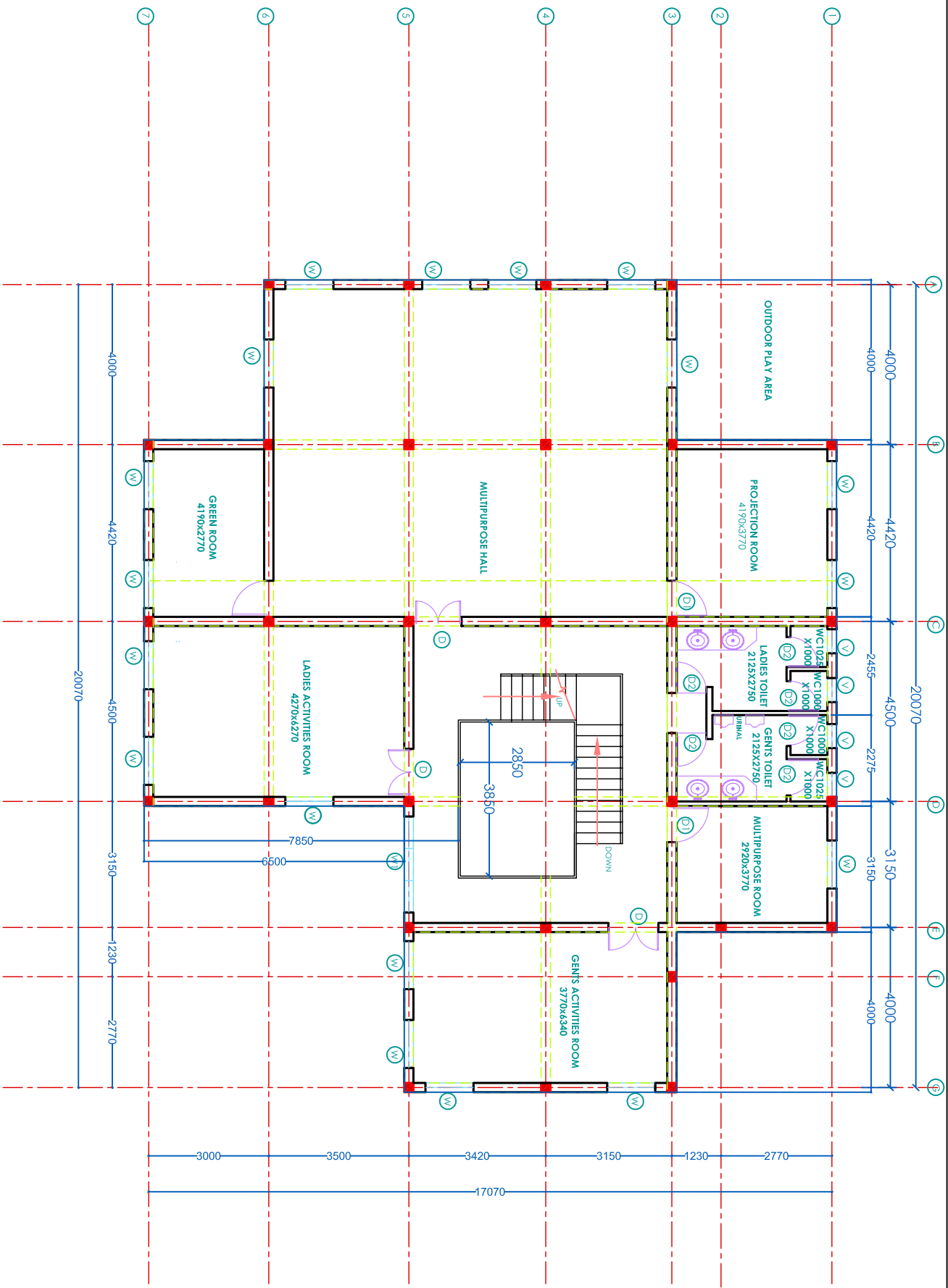
ARCHITECTS

**hudco**

HOUSING & URBAN DEVELOPMENT CORPORATION

HUDCO BHAWAN, I.H.C.,

LODHI ROAD, NEW DELHI-110003



# Model Design for community centre

## FIRST FLOOR PLAN

Drg. No.  
**E-1**

Scale NTS

Date 3-11-2007

ARCHITECTS

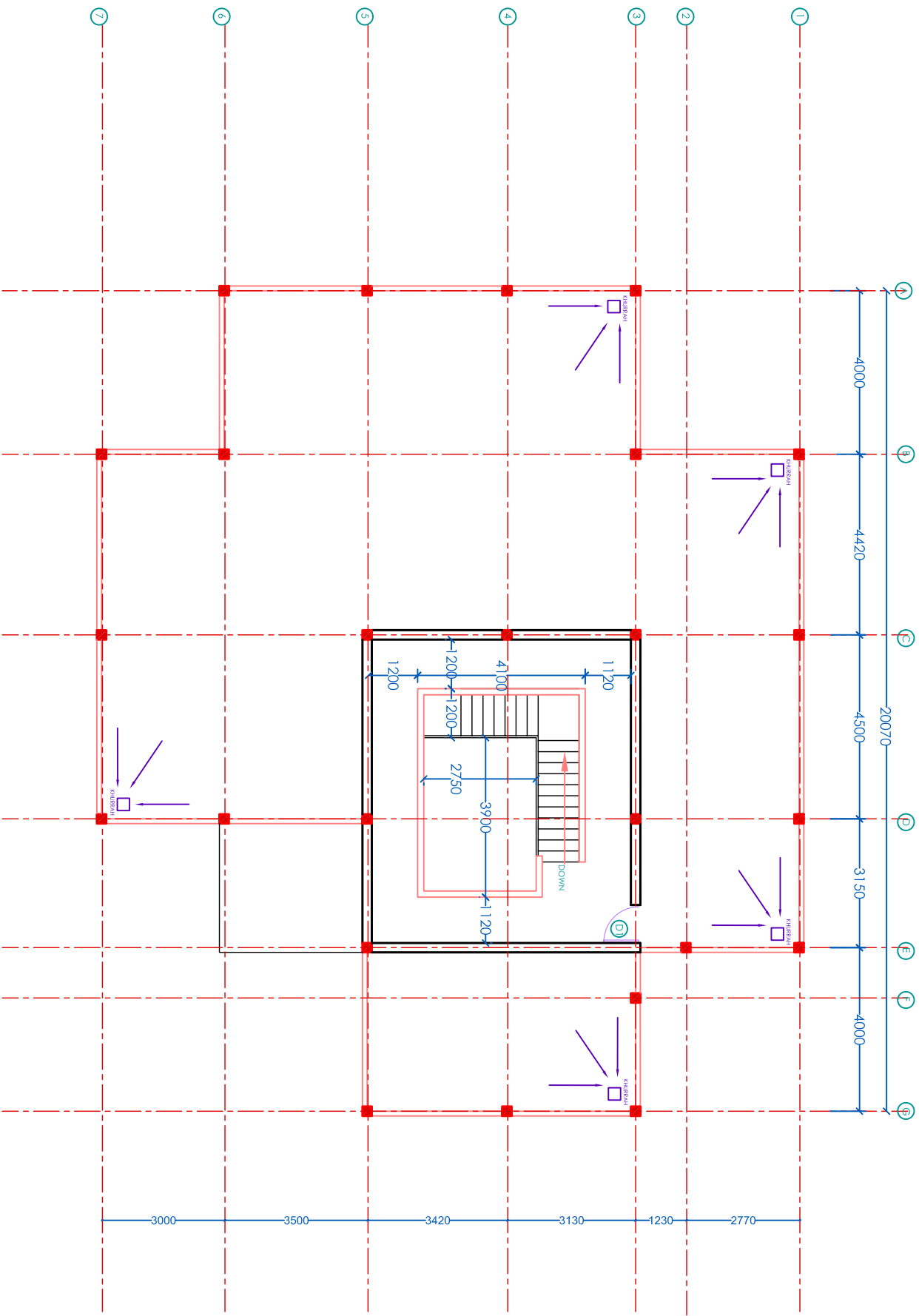


**hudco**

HOUSING & URBAN DEVELOPMENT CORPORATION

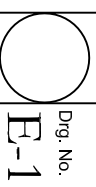
HUDCO BHAWAN, I.H.C.,

LODHI ROAD, NEW DELHI-110003



# Model Design for community centre

## TERRACE PLAN



ARCHITECTS

hudco



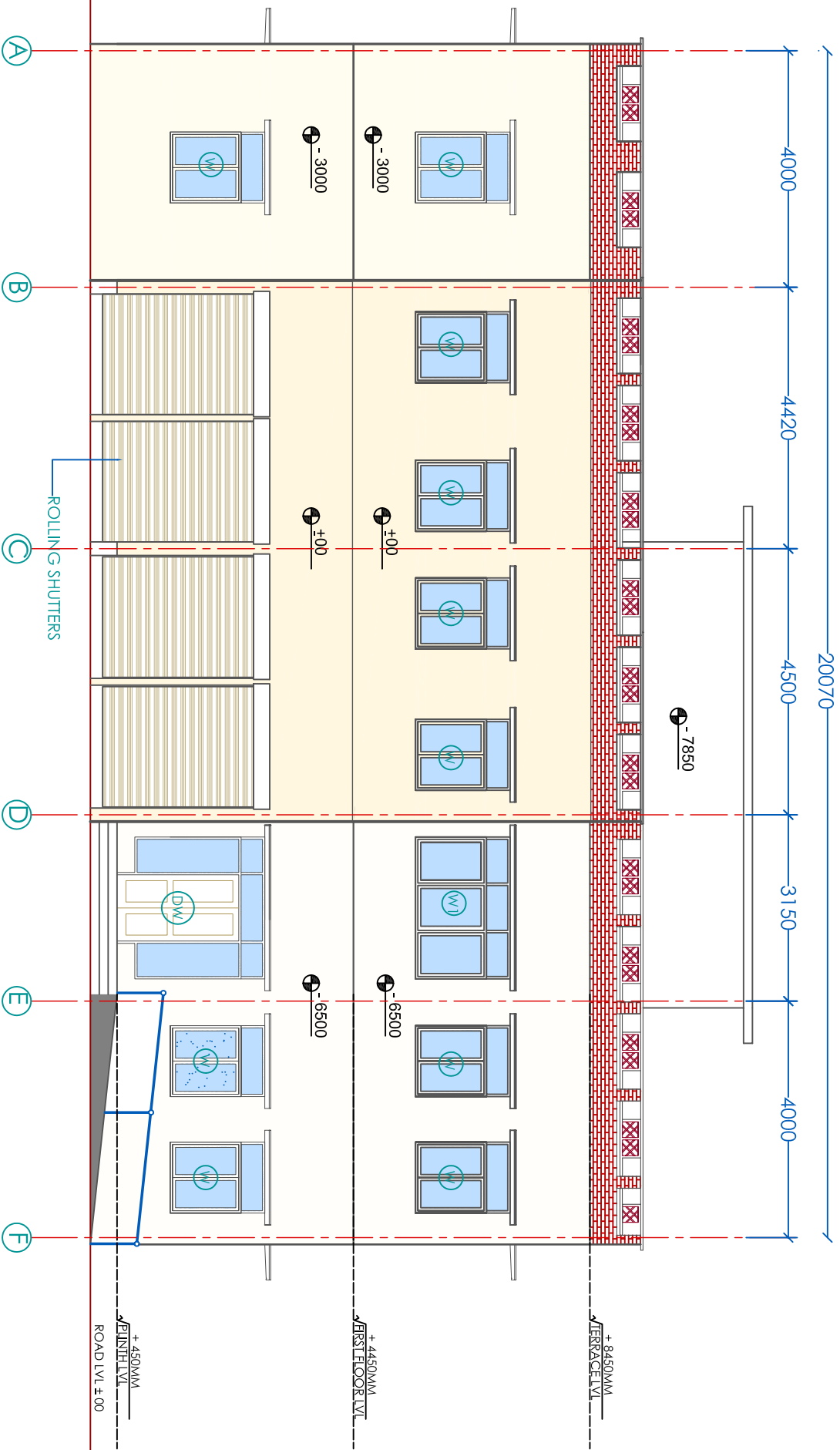
HOUSING & URBAN DEVELOPMENT CORPORATION  
HUDCO BHAWAN, I.H.C.,  
LODHI ROAD, NEW DELHI-110003

Dwg. No.

E-1

Scale NTS

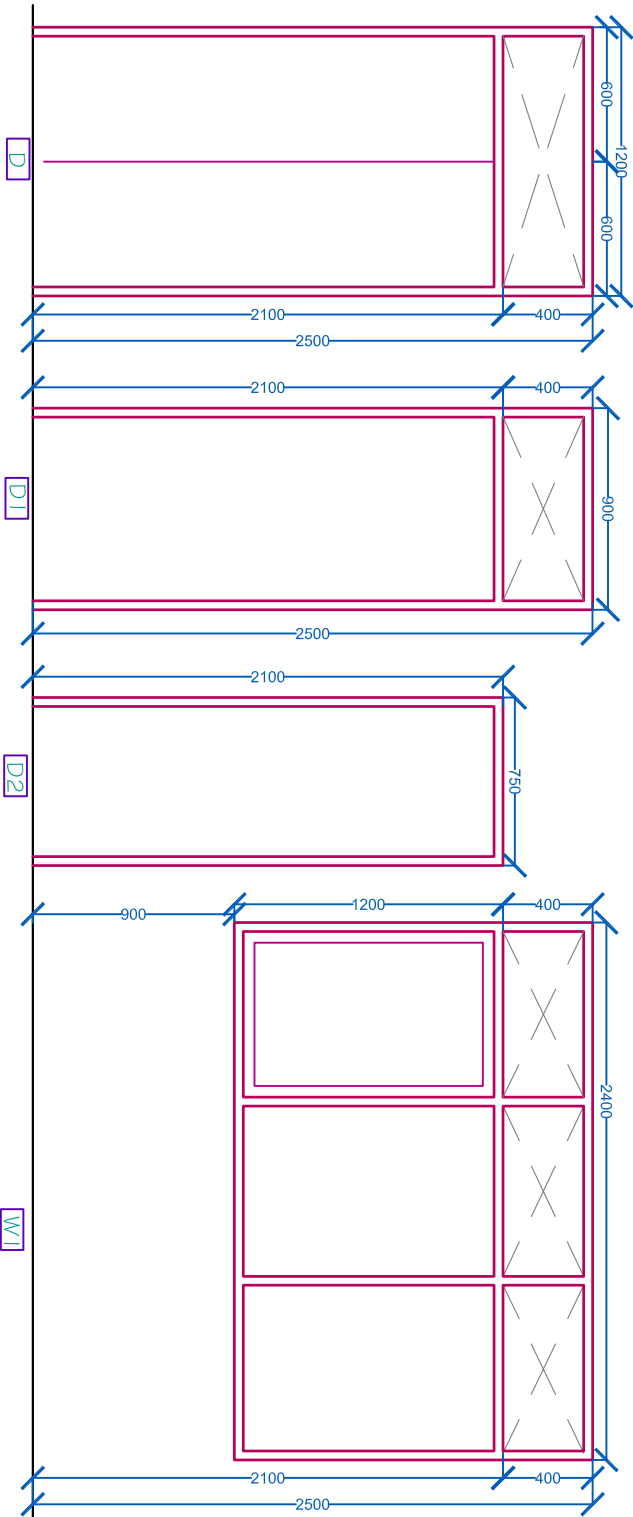
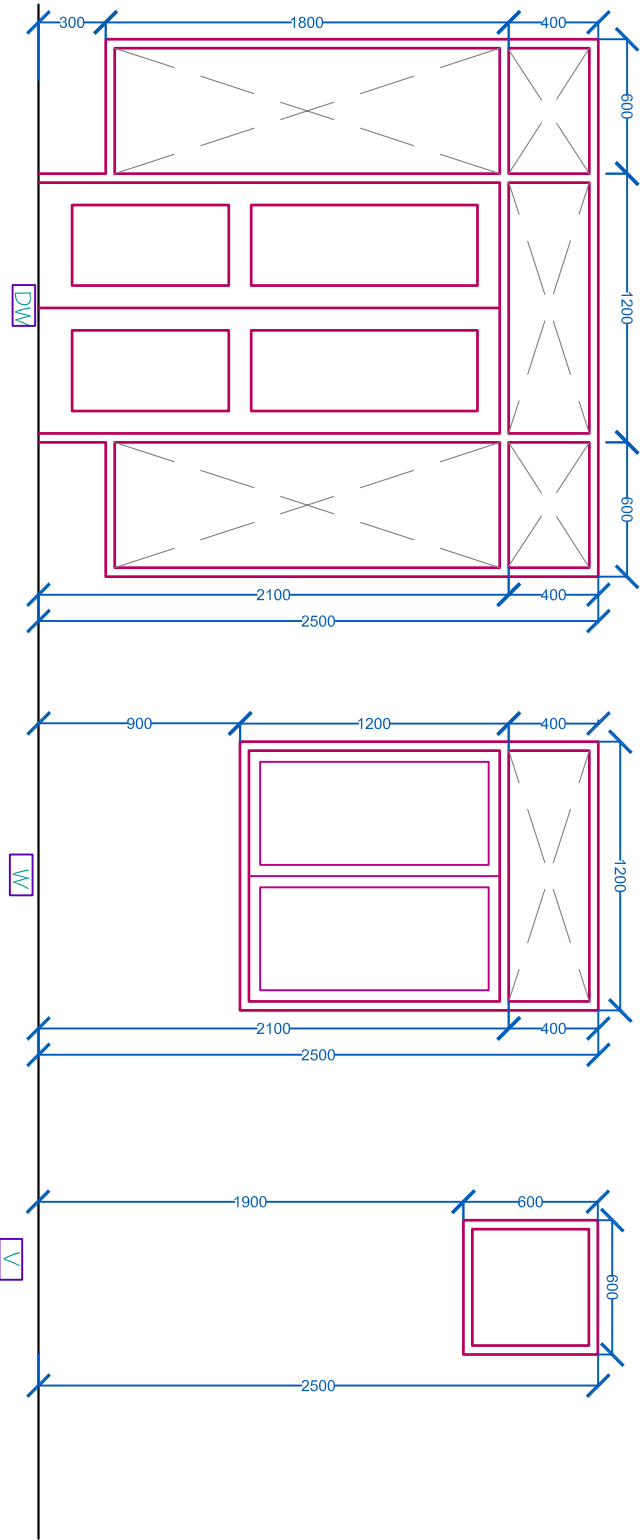
Date 3-11-2007



# Model Design for community centre

## FRONT ELEVATION

Drg. No. <b>E-1</b>	ARCHITECTS <b>hudco</b> HOUSING & URBAN DEVELOPMENT CORPORATION HUDCO BHAWAN, I.H.C., LODHI ROAD, NEW DELHI-110003
Scale NTS	
Date 3-11-2007	



DOOR WINDOW SCHEDULE

--

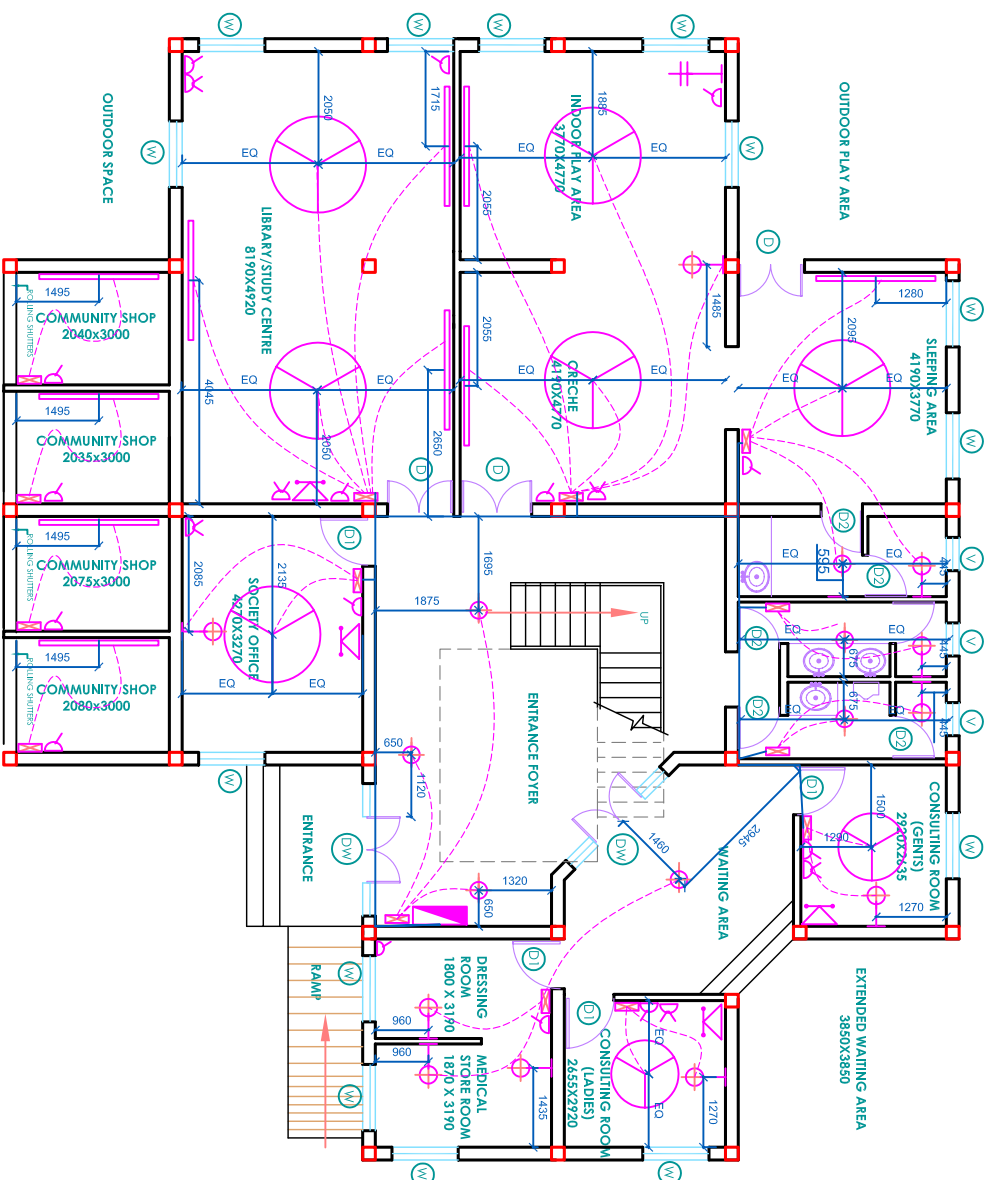
INFRASTRUCTURE PROFESSIONALS ENTERPRISE (P) Ltd.  
C-2, GREEN PARK EXTENSION, NEW DELHI- 110016

TITLE :  
DOOR - WINDOW DETAIL, COMMUNITY CENTRE

DATE :  
CHECKED BY: JPE (P) Ltd  
PHASE : 1

SCALE :  
1:100

REV : 0



ELECTRICAL LAYOUT: GROUND FLOOR PLAN

LEGEND FOR GROUND FLOOR	
	CEILING FAN
	SWITCH BOARD WITH 5 AMP.
	20 AMP SWITCH & SOCKET
	5 -15 AMP SWITCH & SOCKET
	WALL BRACKET LIGHT
	T.V./ CABLE POINT
	TUBELIGHT
	CEILING LIGHT
	TELEPHONE POINT
	MCB
	1

# Model Design for community centre

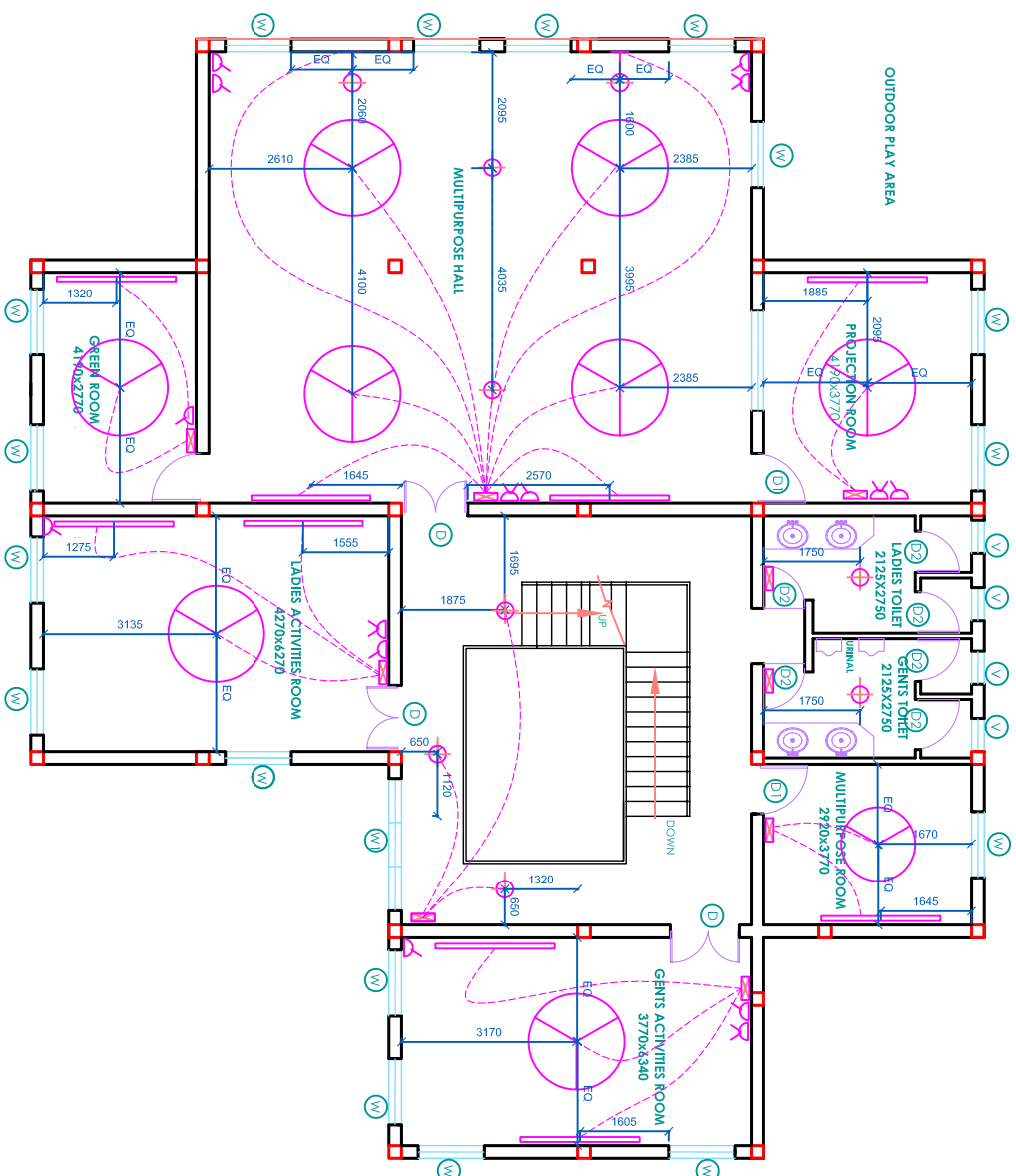
## GROUND FLOOR PLAN

Drg. No.  
**E-2**

Date 6-11-2007

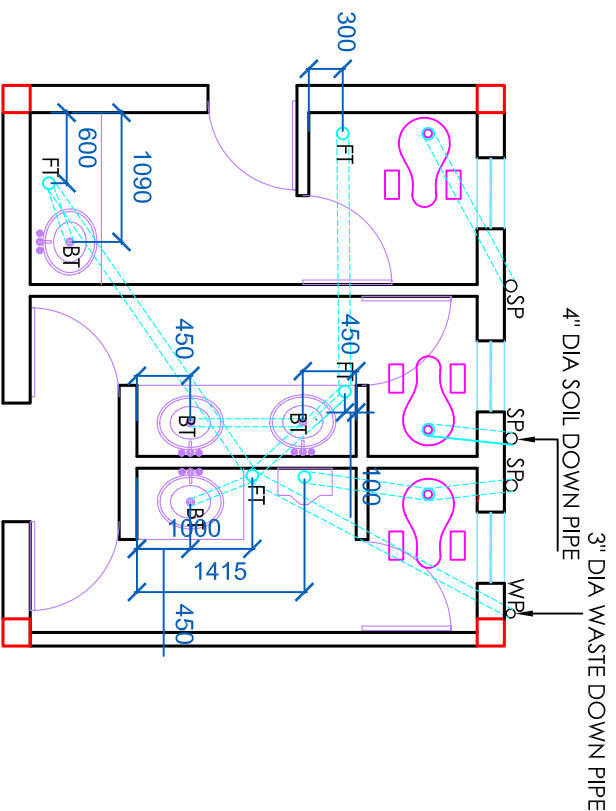
ARCHITECTS

**hudco**  
 HOUSING & URBAN DEVELOPMENT CORPORATION  
 HUDCO BHAWAN, I.H.C.,  
 LODHI ROAD, NEW DELHI-110003

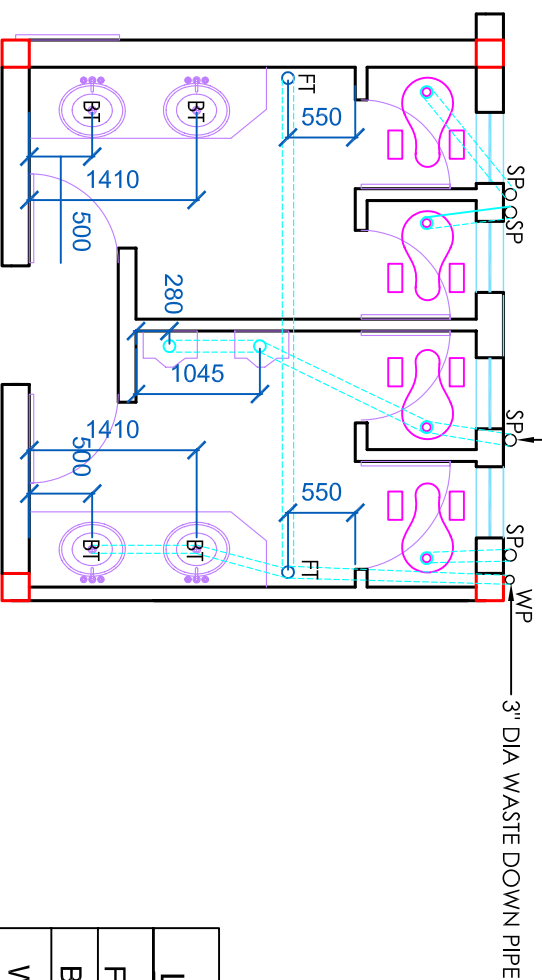


ELECTRICAL LAYOUT: FIRST FLOOR PLAN

LEGEND FOR GROUND FLOOR	
	CEILING FAN
	SWITCH BOARD WITH 5 AMP.
	20 AMP SWITCH & SOCKET
	5 -15 AMP SWITCH & SOCKET
	WALL BRACKET LIGHT
	T.V. / CABLE POINT
	TUBELIGHT
	CEILING LIGHT
	TELEPHONE POINT
	MCB



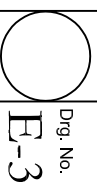
PLUMBING LAYOUT: GROUND FLOOR PLAN



PLUMBING LAYOUT: FIRST FLOOR PLAN

LEGEND	
FT	FLOOR TRAP
BT	BOTTLE TRAP
WP	WASTE PIPE
SP	SOIL PIPE

Community centre



ARCHITECTS

hudco



HOUSING & URBAN DEVELOPMENT CORPORATION  
HUDCO BHAWAN, I.H.C.,  
LODHI ROAD, NEW DELHI-110003

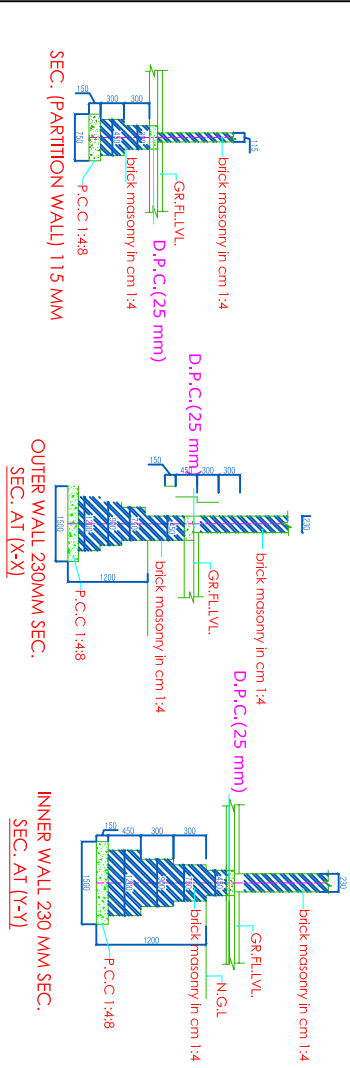
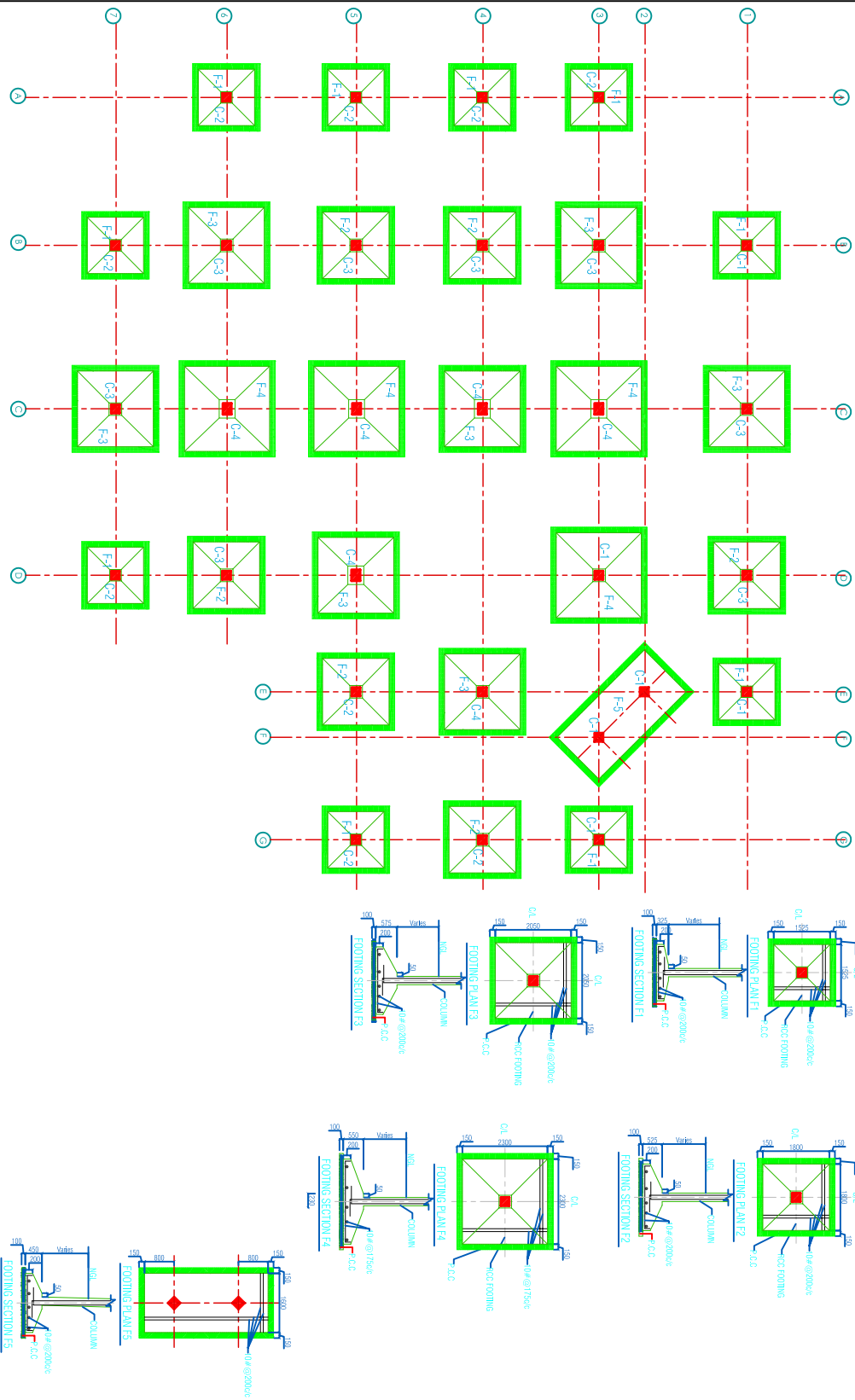
Scale

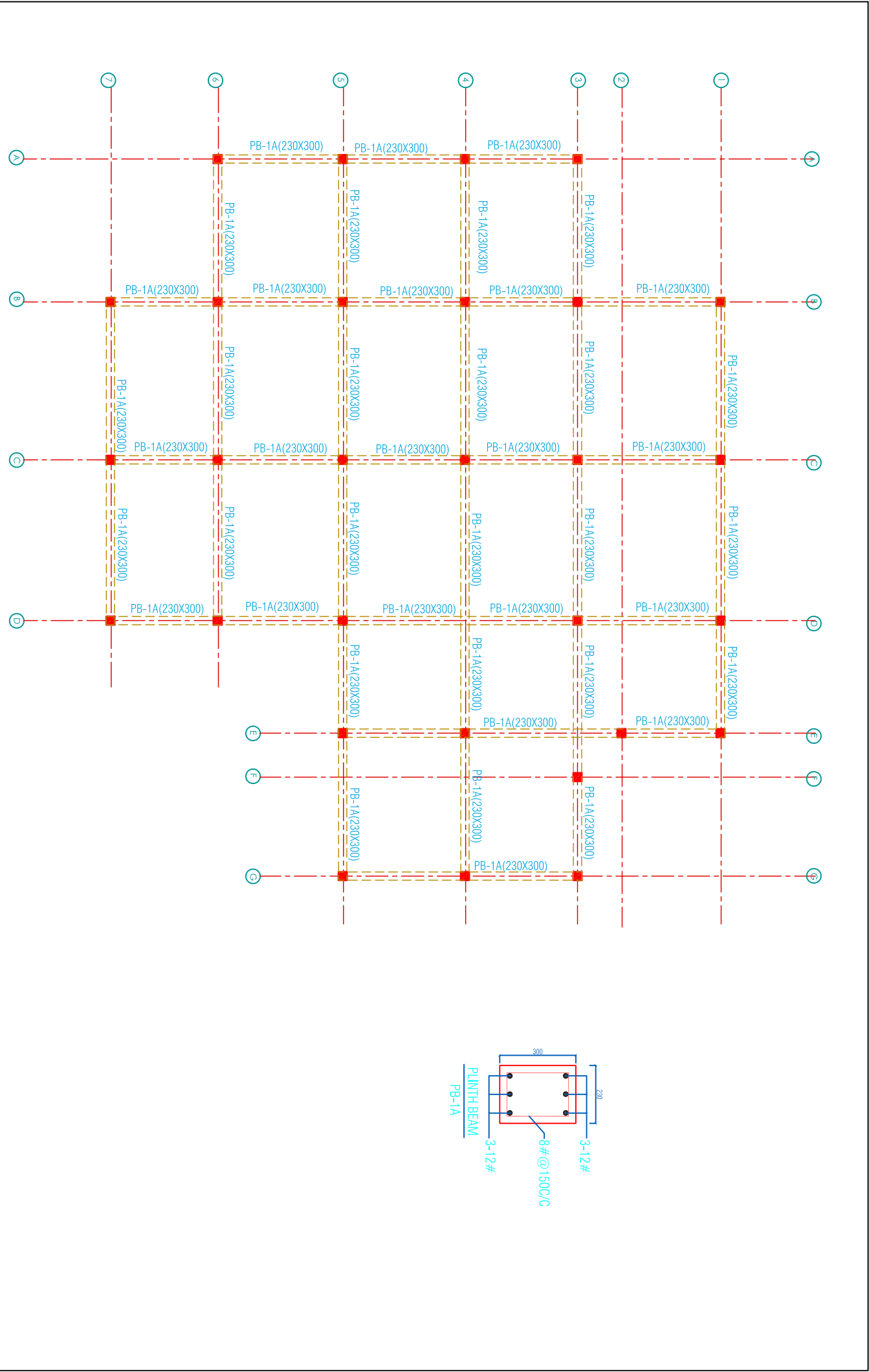
Date 6-11-2008

Dwg. No.

E-3







# Model Design for community centre

## PLINTH BEAM PLAN

PLINTH AREA=260.9 SQMT

Drg. No.

E-1

Scale

NTS

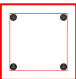
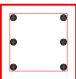
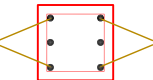
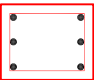
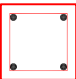
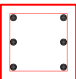
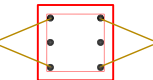
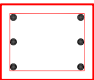
Date

3-11-2007

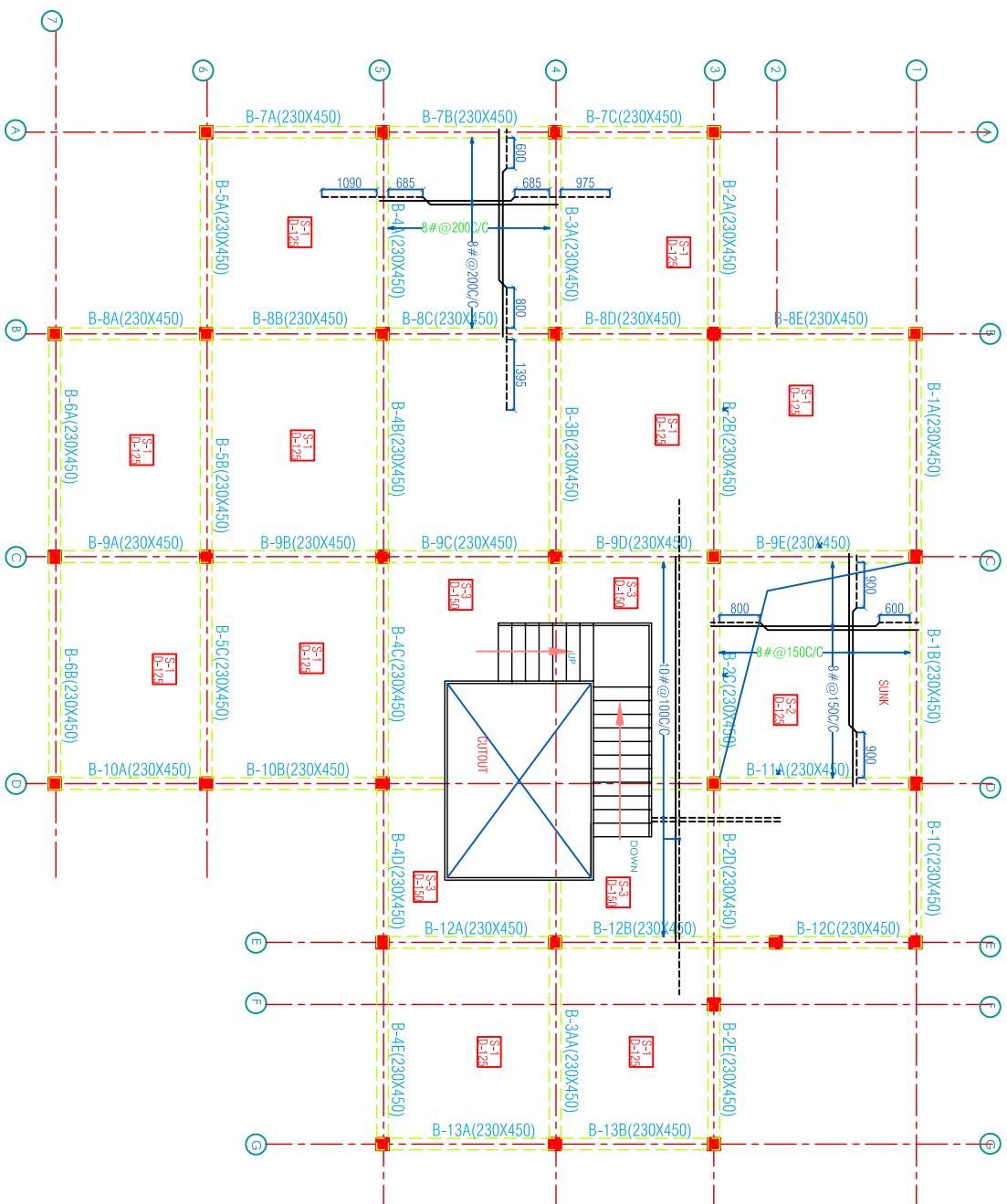
ARCHITECTS

HUDCO

HUDCO BHAWAN, I.H.C.,  
LODHI ROAD, NEW DELHI-110003

FIRST FLOOR TO TERRACE FLOOR	SIZE	230X230		SIZE	230X230		SIZE	230X230		SIZE	230X300	
	MIX.	M-20		MIX.	M-20		MIX.	M-20				
	REINF.	4#12		REINF.	6#12		REINF.	4#16 +2#12		REINF.	6#16	
	RINGS	#8@6" c/c		RINGS	#8@6" c/c		RINGS	#8@6" c/c		RINGS	#8@6" c/c	
	SIZE	230X230		SIZE	230X230		SIZE	230X230		SIZE	230X300	
FOOTING TO FIRST FLOOR	MIX.	M-20		MIX.	M-20		MIX.	M-20		MIX.	M-20	
	REINF.	4#12		REINF.	6#12		REINF.	4#16 +2#12		REINF.	6#16	
	RINGS	#8@6" c/c		RINGS	#8@6" c/c		RINGS	#8@6" c/c		RINGS	#8@6" c/c	
	SIZE	230X230		SIZE	230X230		SIZE	230X230		SIZE	230X300	
COLUMN	C-1			C-2			C-3			C-4		

Project	Model Design for community centre			D: 1200 X 2100 (2 shutter) D1: 900x1800 (1 shutter) W: 1300X1500 (2 shutter) V: 700 X 500		Drg. No. LC1	
Sheet Title	COLUMN SCHEDULE			Scale APP Date 03-02-2008			

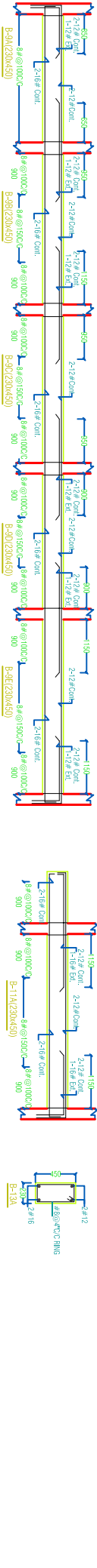
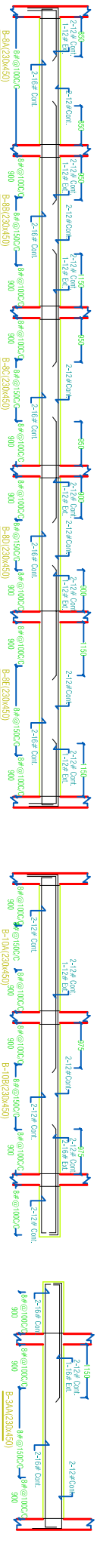
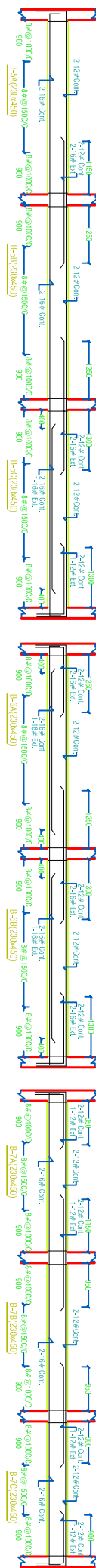
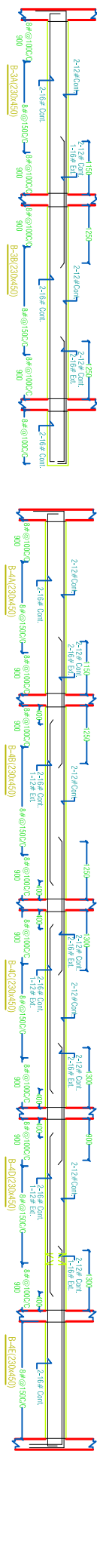
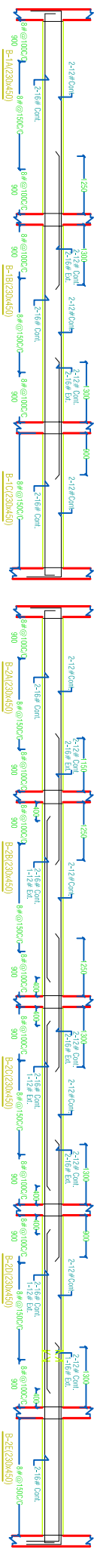


# Model Design for community centre

## GROUND FLOOR FRAMING PLAN

PLINTH AREA=260.9 SQMT

Drg. No.	E-1
Scale	NTS
Date	3-11-2007



# Model Design for community centre

## GROUND FLOOR BEAM DETAIL

PLINTH AREA=260.9 SQMT

Dwg. No.

E-1

Scale

NTS

Date

3-11-2007

ARCHITECTS

HUDCO

HOUSING & URBAN DEVELOPMENT CORPORATION

HUDCO BHAWAN, I.H.C.,

LODHI ROAD, NEW DELHI-110003

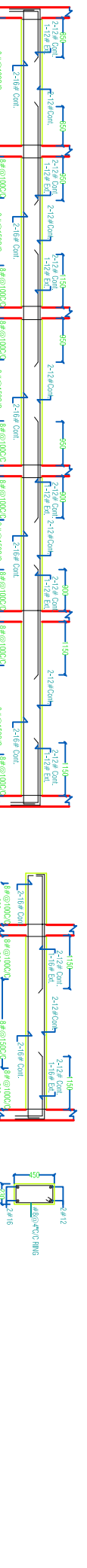
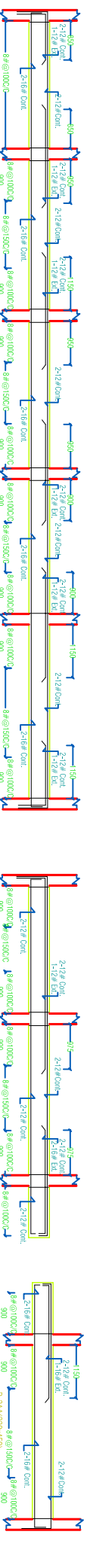
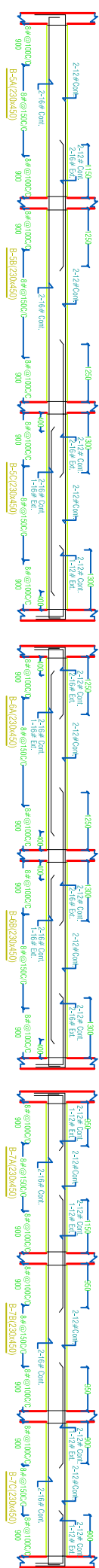
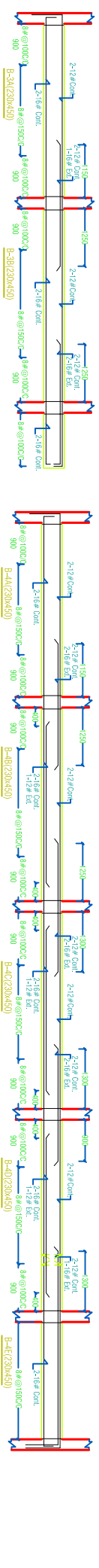
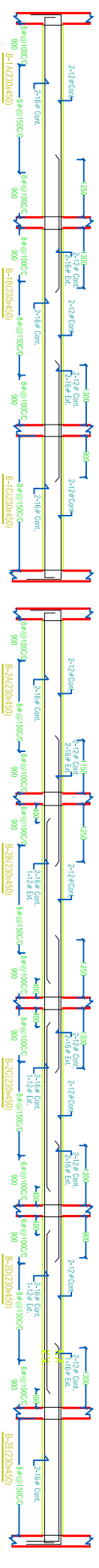
Structural drawing of a reinforced concrete slab showing a grid of beams (B-1A to B-13B) and columns (C-1 to C-13). The drawing includes dimensions, reinforcement details (e.g., 8# @ 200C/C), and a central staircase area labeled 'CUTOUT'.

Dr. No. **E-1**

huddco

HOUSING & URBAN DEVELOPMENT CORPORATION  
HUDCO BHAWAN, I.H.C.,

LODHI ROAD, NEW DELHI-110003



# Model Design for community centre

## TERRACE FLOOR BEAM DETAIL

PLINTH AREA=260.9 SQMT

Dwg. No.	Scale	Date
E-1	NTS	3-11-2007

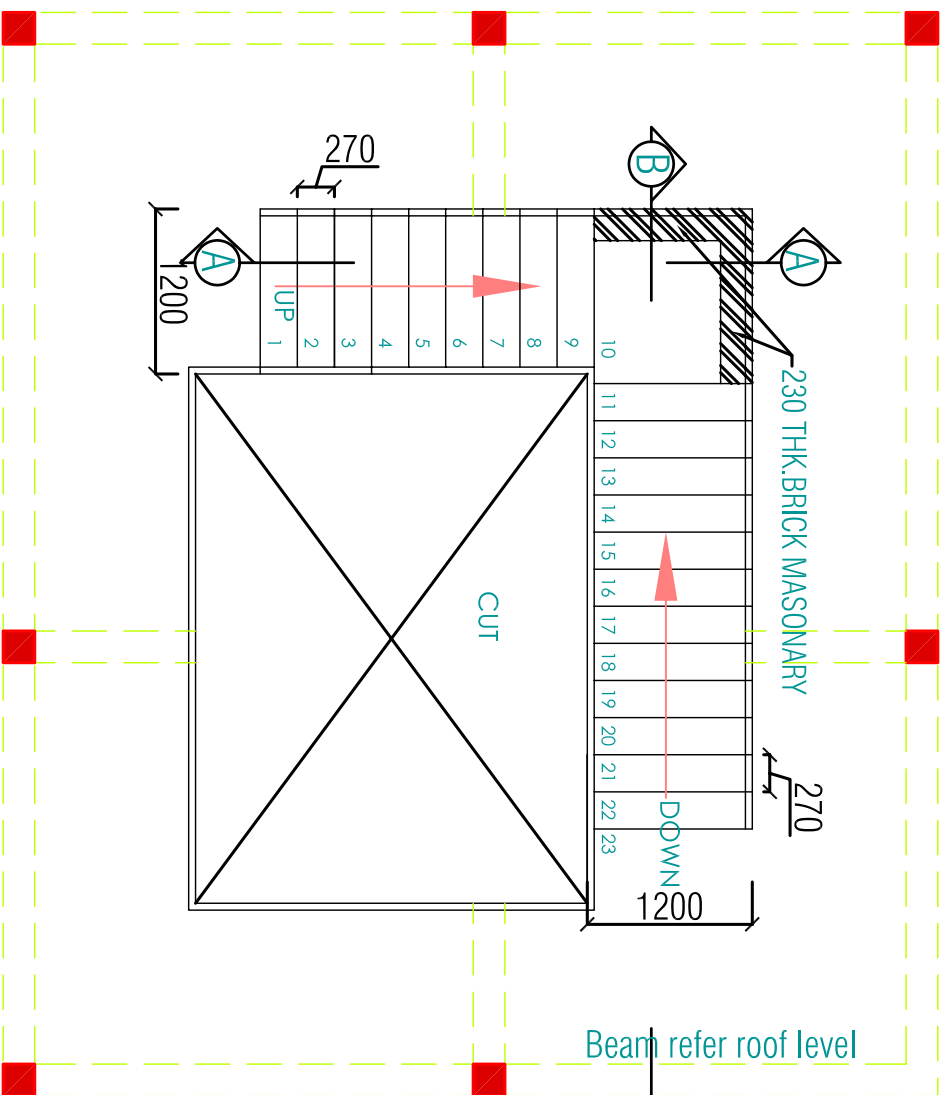
ARCHITECTS

HUDCO

HOUSING & URBAN DEVELOPMENT CORPORATION

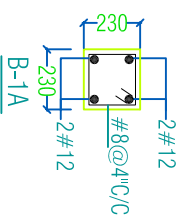
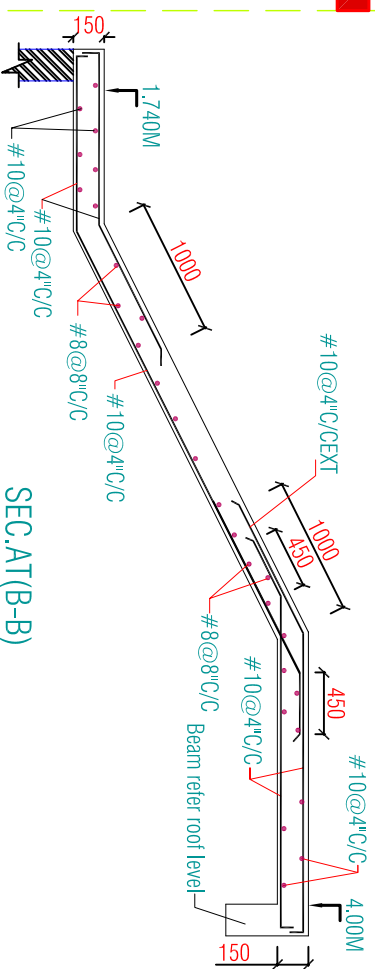
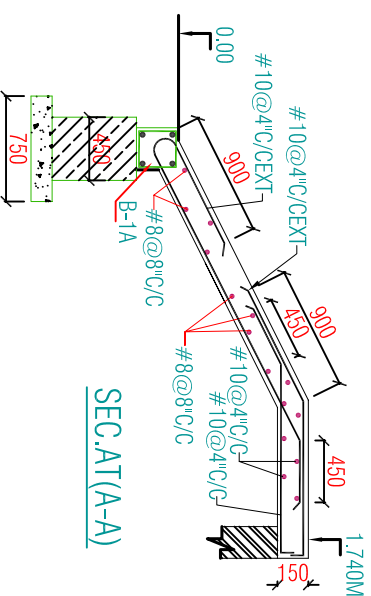
HUDCO BHAWAN, I.H.C.,

LODHI ROAD, NEW DELHI-110003



NUMBER OF RISER = 23 (174 MM)  
 NUMBER OF TREAD = 22 (270MM)  
 WIDTH OF LANDING = 1200MM

Beam refer roof level



# Model Design for community centre

## GROUND FLOOR PLAN

PLINTH AREA=260.9 SQMT

Drg. No.  
E-1

Scale NTS

Date 3-11-2007

ARCHITECTS

hudco

HOUSING & URBAN DEVELOPMENT CORPORATION  
 HUDCO BHAWAN, I.H.C.,  
 LODHI ROAD, NEW DELHI-110003

hudco